



REVENT ONE26/S/G

Max tray size:
1 single rack
457x660 mm

Round Single Rack Oven

R FEATURES

Baking quality

- Bakes everything without adjustments.
- New revolutionizing RTCC (Round Total Convection Control) system ensuring:
 - Minimized weight loss
 - Even bake
 - Perfectly even coloured products
 - Maximized bread volume
- New light weight RHVS (Round High Volume Steam) system easy to clean and ensuring:
 - Excellent texture
 - Excellent crust

Total Cost of Ownership

- Perfect bake without rejects.
- Reduced equipment footprint opens up new possibilities for small spaces.
- The oven is designed for 24/7 production based on the experience from our earlier 700 series.
- Most flexible choice for a diversified bakery assortment.
- Simple handling with self-instructive and angled GIAC touch control panel.
- Sliding door easy to handle and reducing risk for burn injuries.
- Multiple-alarm system allowing for up to four different products to be baked at once.

- World leading energy efficiency verified by accredited institutie, through:
 - Round baking chamber minimizing heated air volume
 - New patented Revent Heat Exchanger and modulating burner with high efficiency according to DIN 8766
 - Energy save mode
 - New High Tech Insulation
- Minimized service cost.
- Oven designed in sections ensuring fast installation and access through standard dimensioned doorways. Baking within a couple of hours.

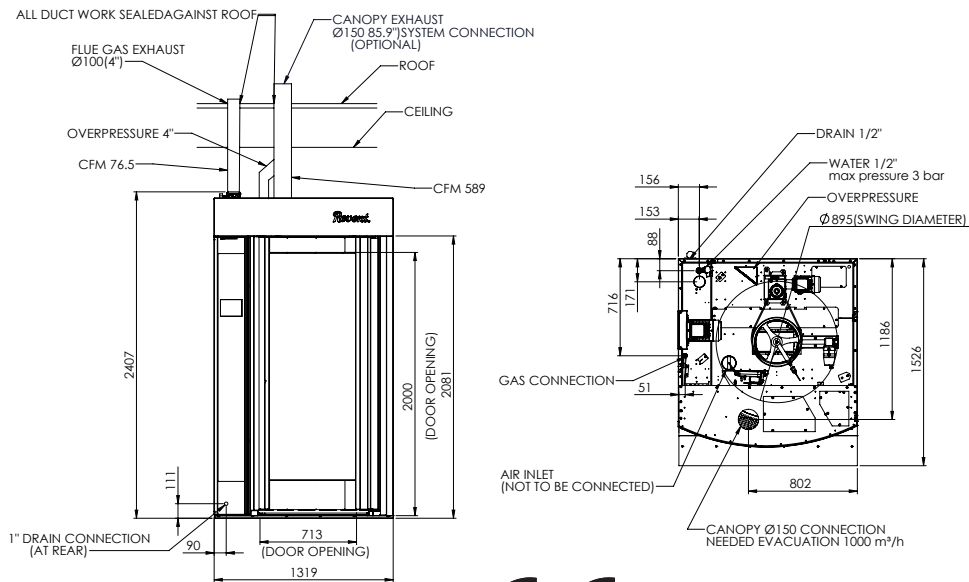
Sanitary

- Stainless steel.
- Non corrosive steam system.



In Bread We Trust

This is an example. For installation use the installation drawing and manual.



REVENT ROUND OVEN ONE26 S GAS
701633 A

Specifications

Maximum Heat Capacity	50 kW
Temperature range	35°-300°C
Total shipping weight	900 kg*
Minimum intake opening	1320 x 1450 mm one-piece shipment without skid
Minimum section tilt up height and recommended service height	2700 mm
Swing Diameter	895 mm
Max load for rack lift	200 kg
Steam Generation	3 l/20 sec at 250°C
Tubular electrical heaters	Stainless steel
Manufacturing material	Stainless steel
Steam and damper control	Automatic
Door	Triple glass

*Final shipping weights will depend on the final order specifications. Continuous product development is a Revent policy. Therefore, we reserve the right to change specifications and/or design without prior notice. Pictures or drawings may include product options.

Utility requirements

Electrical	
Standard	3PH400-230V+16A
Optional	3PH220-230V+16A 3PH415-240V+16A
Contact factory for other power options.	
Gas	
Natural Gas & Liquid propane	50 kW @ 20-30 mbar drop to 1/2"
Water and Drain	
Water Supply	1/2" ø 35-45 PSI, cold
Drain	R1/2"
Water quality/ Chemical analysis	Revent Int. requirement
Magnesium, Mg	<30 mg/ml
Calcium, Ca	20 - 100 mg/l
Hardness	4,0 - 7,0 dH
pH at 20°C	7,5 - 8,5 pH
Alkalinity	>60 mg/l
Chlorides	<10 mg/l
Conductivity	200 - 800 µS/cm
Ventilation	
Over Pressure Duct	Overpressure outlet located at the backside of the roof.
Over Damper	Over damper is an air inlet and not to be connected.
Canopy vent	150 mm connection.
Required Canopy Evacuation	1000 m³/h
Oven Stack Exhaust	ø 100 mm, draft (-3)-(-6) mm water pillar (oil and gas versions only)

Required Stack
Evacuation 130 m³/h.
If chimney is not straight, please contact factory.

Installation requirements

The oven must be installed on a levelled non-combustible surface. The oven may be installed flush against a wall. Only the front and top need to be left open for access. The space on top of the oven must be well ventilated and the temperature must not exceed 50°C. This is to avoid damage to electric components.

Venting according to local code (regulations).
Venting ducts installed according to specifications in the Installation drawing. Venting ducts supplied by others.

Options

- Oven can be splitted in sections for access through an opening of 900 x 1400 mm. Assistance from factory required.

Revent is 9001 certified.

Revent sales representative:



Revent International AB
PO Box 714, SE 194 27 Upplands Väsby, Sweden
Phone +46 8 590 006 00, fax +46 8 590 942 10
E-mail info@revent.se, www.revent.com